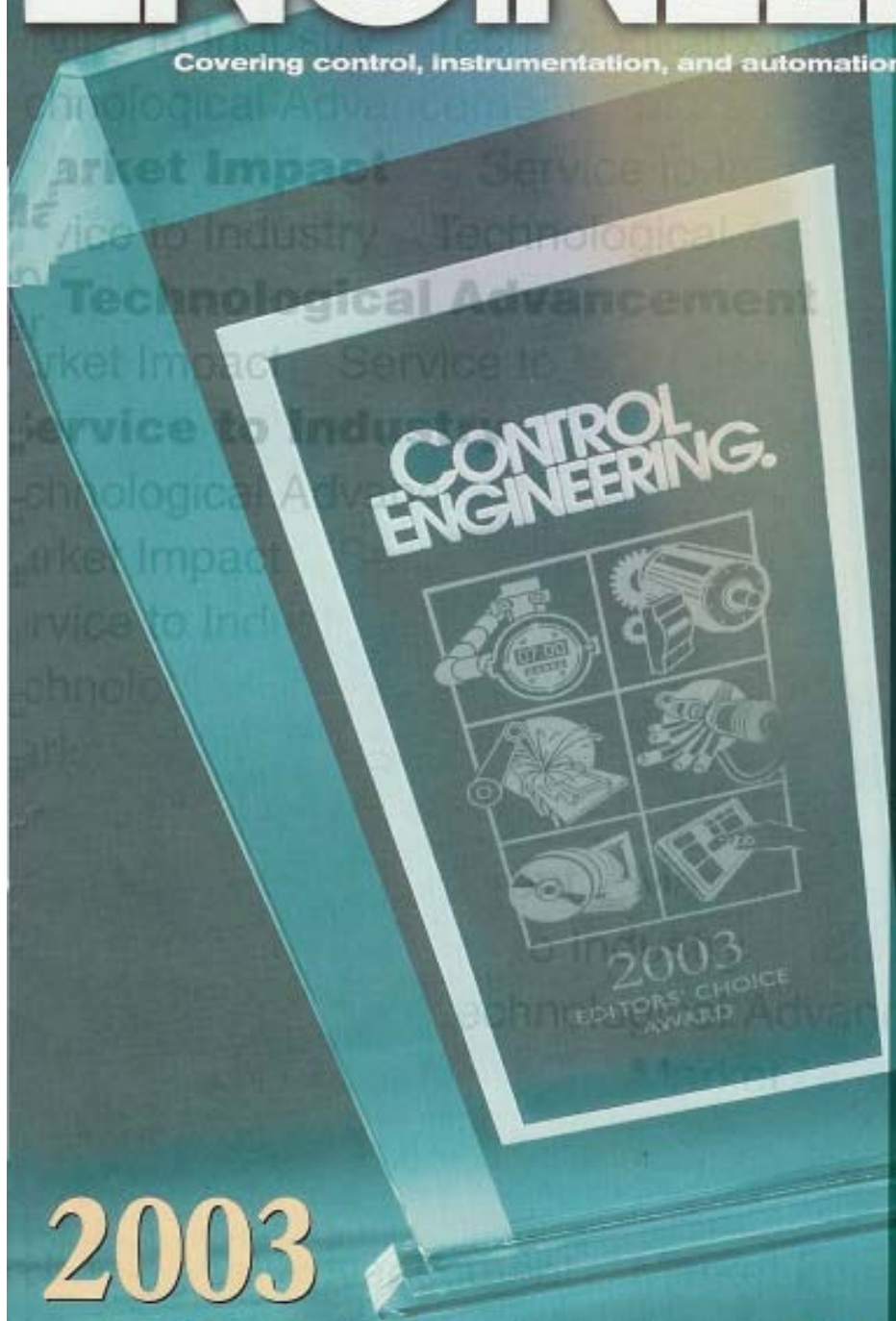


CONTROL ENGINEERING

Reed Business Information

Supplement

Covering control, instrumentation, and automation systems worldwide



2003

Editors' Choice Awards

DVT

Swagelok

ELMO
Molten Control

ELAU

COGNEX
Voices for Industry™

autodesk

Honeywell

analogix

EtherCAT
Technology Group



ipd

SIEMENS

ember

NATIONAL INSTRUMENTS

LANTRONIX

International
ZIGBEE

LANTRONIX

Network
Vision

CTC

Magnetrol

MYNAH

SONARtrac

kontron
... always a jump ahead

FANUC

ABB

MOTOROLA

CONTROL
TECHNIQUES

iKEY

OPTO 22

BALDOR

MOORE
INDUSTRIES

ROCKWELL
SOFTWARE

EMERSON
Process Management

Wanderson

Hoffman
A Field Controls

Service, Advancement, Impact

Control Engineering's seven editors used three primary criteria -- service to the industry, technological advancement, and market impact -- to select the 35 winners of the 17th annual Editors' Choice Awards.

Jim Montague and *Control Engineering* staff

Sense, decide, and act are the three cornerstones of the control and automation field and its many related industries and applications. Similarly, the three cornerstones of the *Control Engineering* 2003 Editors' Choice Awards are service to the industry, technological advancement, and market impact.

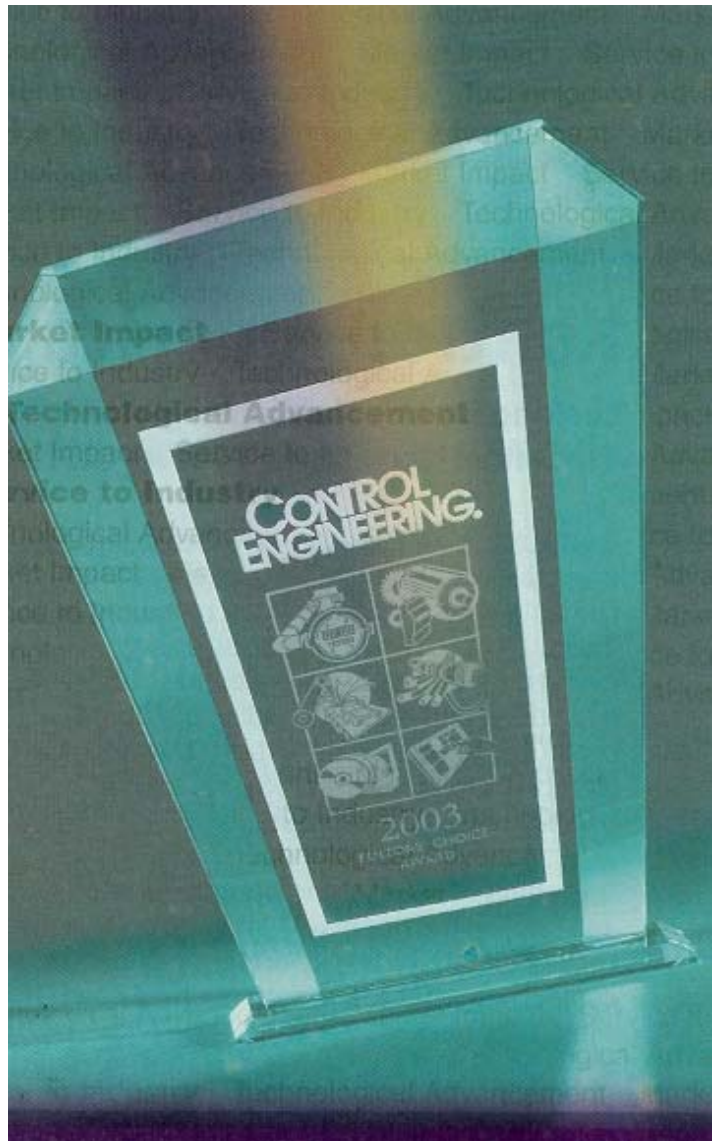
Seven editors-Frank Bartos, David Greenfield, Dave Harrold, Mark Hoske, Jeanine Katzel, Jim Montague and Vance VanDoren use these three criteria to compare and judge the thousands of product and solutions covered each year in *Control Engineering's* print, Web, and e-mail publications. The editors then nominate, argue, and vote to determine winners for that year. "It's always challenging to select winners from among all the areas we cover-automation, control, instrumentation, software, and networks," says Mark Hoske, *Control Engineering's* editor-in-chief. "It seemed a particularly difficult selection process this year. I believe vendors have ramped up product innovation in anticipation of better business in 2004."

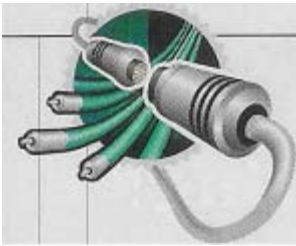
To celebrate *Control Engineering's* 50th anniversary in 2004, the editors and publisher have added a second component to the award selection process for 2003. For the first time, the magazine's subscribers are being enlisted to vote for *Control Engineering's* new Engineers' Choice Award by selecting the top winner in each of this year's eight product categories. The eight winners will be revealed during the traditional Editors' Choice awards ceremony, held during National Manufacturing Week, Feb. 23-26, in Chicago.

"I'm looking forward to seeing what products our subscribers consider most worthy," says David Greenfield, *Control Engineering's* editorial director. "Winners of our new Engineers' Choice Awards will be announced as part of our daily news coverage following the ceremony and in the magazine's March 2004 print edition."

Control Engineering's editorial categories posting awards this year include: Embedded Control; Human-Machine Interface; Instrumentation and Process Sensors; Machine Control and Discrete Sensors; Motors, Drives, and Motion Control; Networks and Communications; Process and Advanced Control; and Software and Information Integration.

Frank J. Bartos, David Greenfield, Dave Harrold, Mark T. Hoske, Jeanine Katzel, Vance J. VanDoren, and Michael Babb also contributed to this article.





Visualization tool handles Ethernet support

Network Vision's **IntraVUE**

Intra VUE is a new network and device visualization tool, developed by Network Vision Inc., which gives control engineers ability to handle all of Ethernet's basic support functions. It runs on a network-connected computer and is compatible with industrial Ethernet protocols EtherNet/IP, Modbus TCP, FOUNDATION fieldbus HSE, and Profinet. IntraVUE turns its computer into a network monitor that continuously logs all network activities.

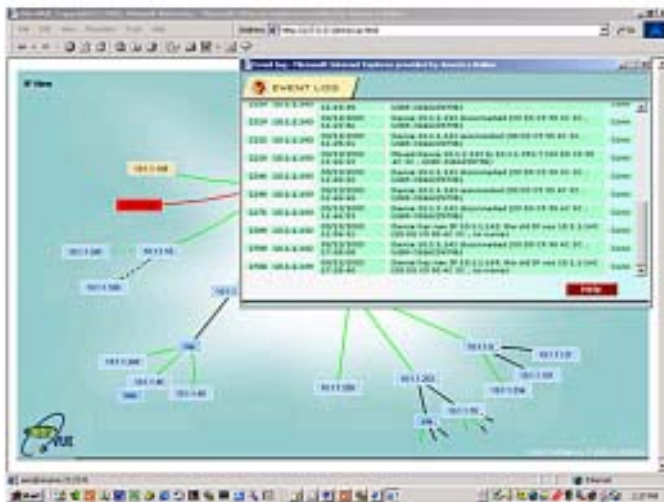
Visualization gives users an accurate representation of the network by using a patented technology developed for information navigation in a hyperbolic structure. Users can pull and move the network, as well as compress areas to allow for a true visualization on interconnections. Lines indicating wiring contain such information as the ports they connect to, ping response times, and bandwidth utilization.

Connections among devices are colored to indicate status. Managed devices that have

information about connections also show colors to indicate health status, while unmanaged lines appear black or red to indicate if they're communicating or not. Wireless devices are depicted as dotted lines, and have the same color indications.

As a result, an entire network can be displayed and navigated on one screen,

eliminating complex paging structures. Everything needed by a device can be brought up with one click. Likewise, buttons allow users to select activities, such as ping, telnet and ftp, with no need to remember specifics, such as opening up a DOS box or command prompt. Configurable web links give users clickable access to user manuals, wiring diagrams, operating procedures, or real-time status. www.intravue.net



- Turns computer into a continuously logging network monitor
- On-screen line colors indicate health status
- Entire network can be displayed and navigated on one screen



For details, contact
info@intravue.net
or visit our website,
www.intravue.net

IntraVUE™ is a product of
Network Vision, Inc.
Newburyport, MA, USA
1.978.499.7800